



## INSTALLING SPEEDCAST

You will receive your SpeedCast software either on a USB drive or by downloading from our website. There are two .exe files to load. Unzip the two files to your desktop.

### Step 1: Login as Administrator

Make sure you are logged in as the computer's administrator. If you are not sure, please refer to this tutorial: <http://windows.microsoft.com/en-US/windows7/How-do-I-log-on-as-an-administrator>

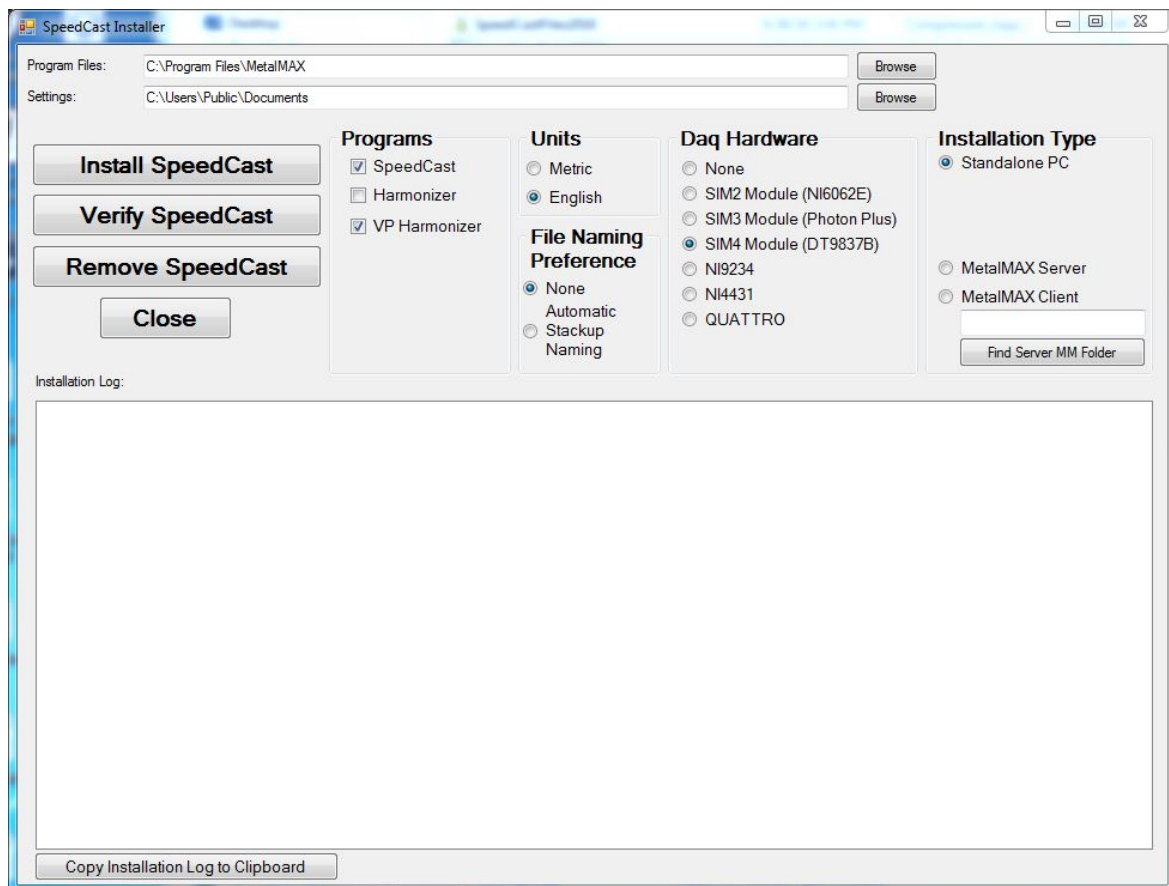
You may be able to load as the administrator using the following instructions: [http://www.reactiondesign.com/support/help/help\\_installing/windows7/](http://www.reactiondesign.com/support/help/help_installing/windows7/)

If you are not able to login as the administrator try this:

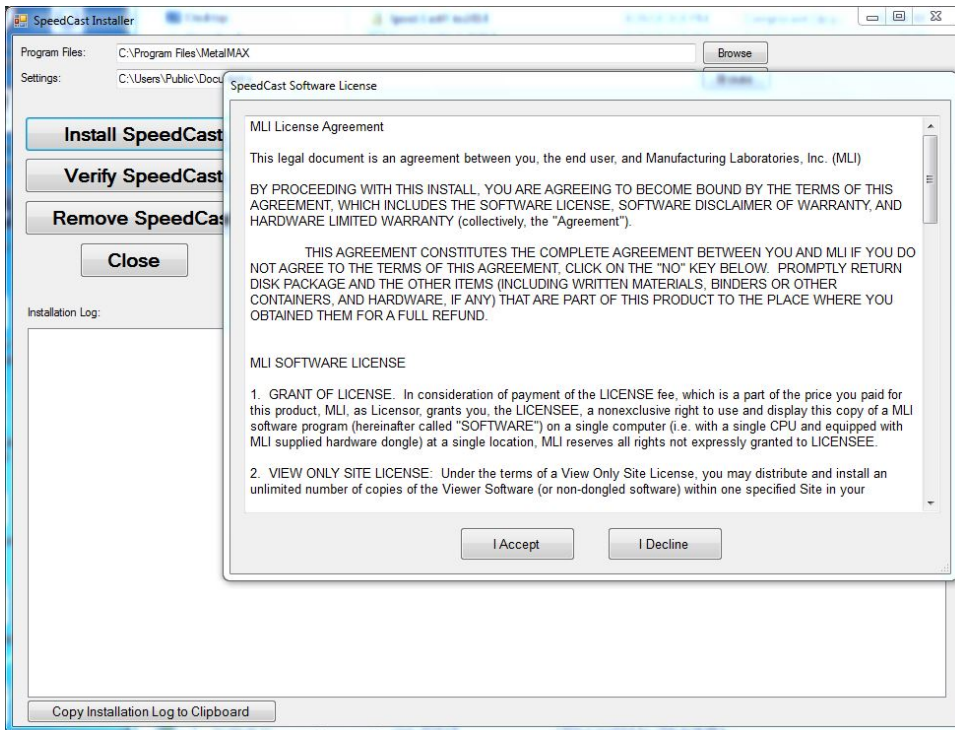
**Right Click on the .exe file to install and click on "Run as Administrator"**

## Step 2: Install SpeedCast Software First

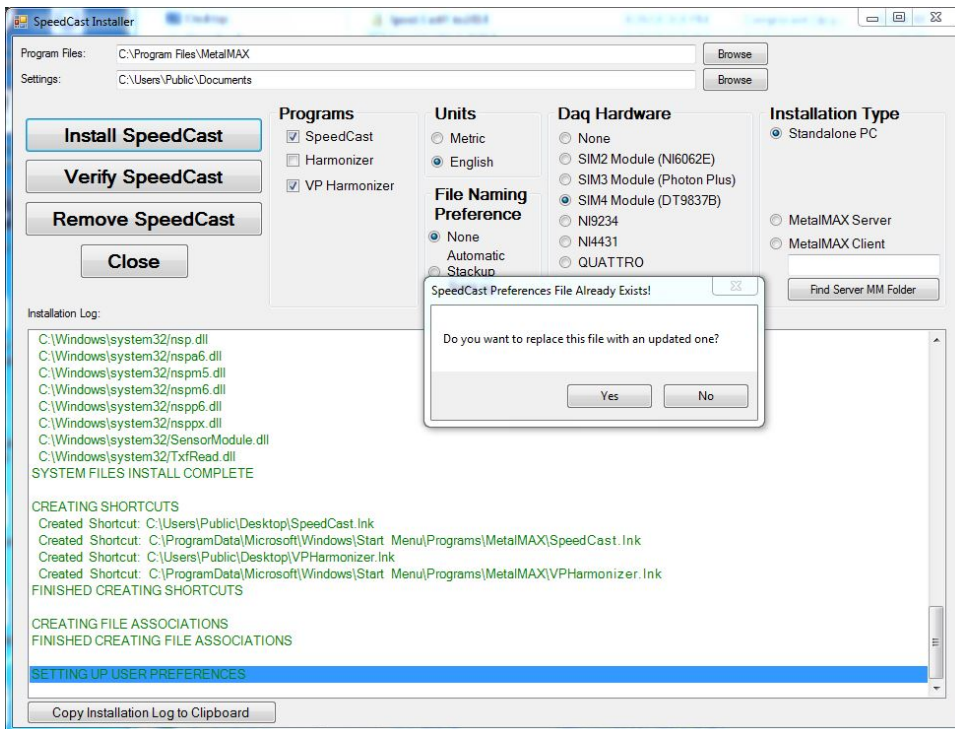
Install the SpeedCast Software first. Open the SpeedCast Install folder. Do not unzip the file named SpeedCastFiles2018.zip. Click on the file named SpeedCastInstall2018.exe (or right click on it and click Run as Administrator). The window below will open. Make sure all on the clicked buttons match this photo (you can toggle English to Metric is that is what you will use). Click on Harmonizer or VPHarmonizer depending on your subscription level (VPH is standard). Click NONE for File Naming Preference. Select the correct DAQ unit you are using. SIM4 Module (DT9837B) is for all BlueSwarf DC and recent MetalMax TXF kits. Click on the "Install SpeedCast" button.



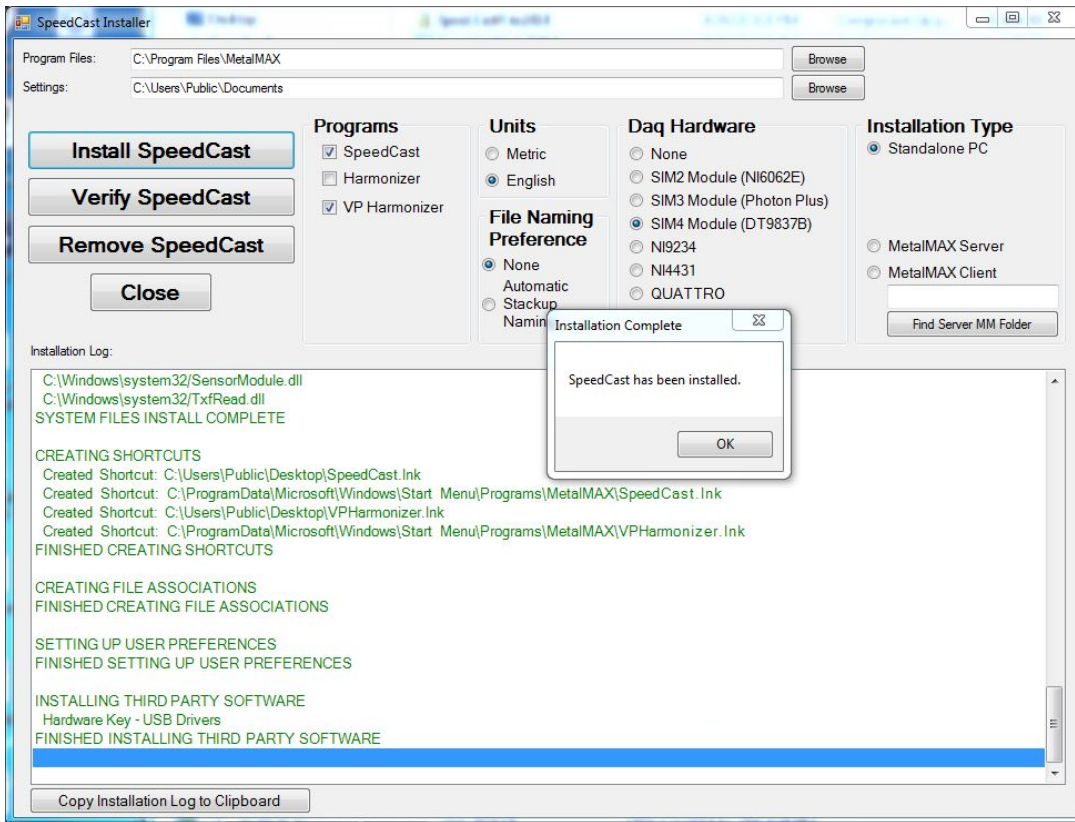
If you are installing SpeedCast over an existing MetalMax TXF or BlueSwarf Data Collector installation, it will use your existing databases.



Click "I Accept"



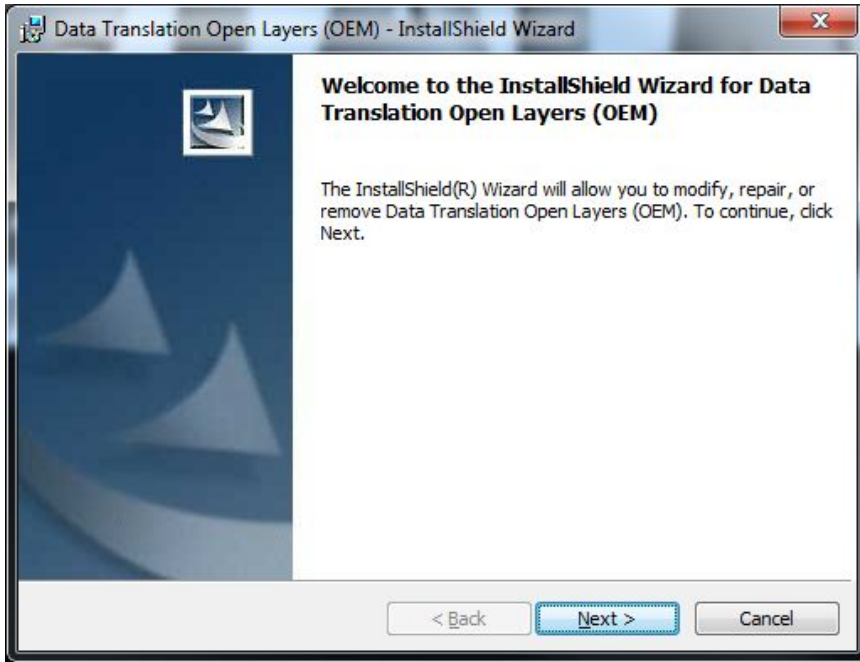
If this message appears, click "Yes"



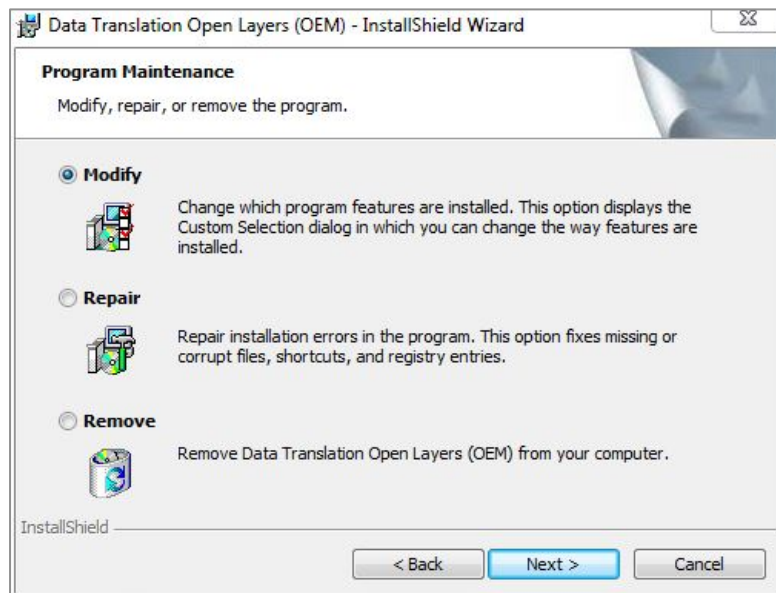
Click OK, then the “Close” button

### Step 3: Install OEM Software

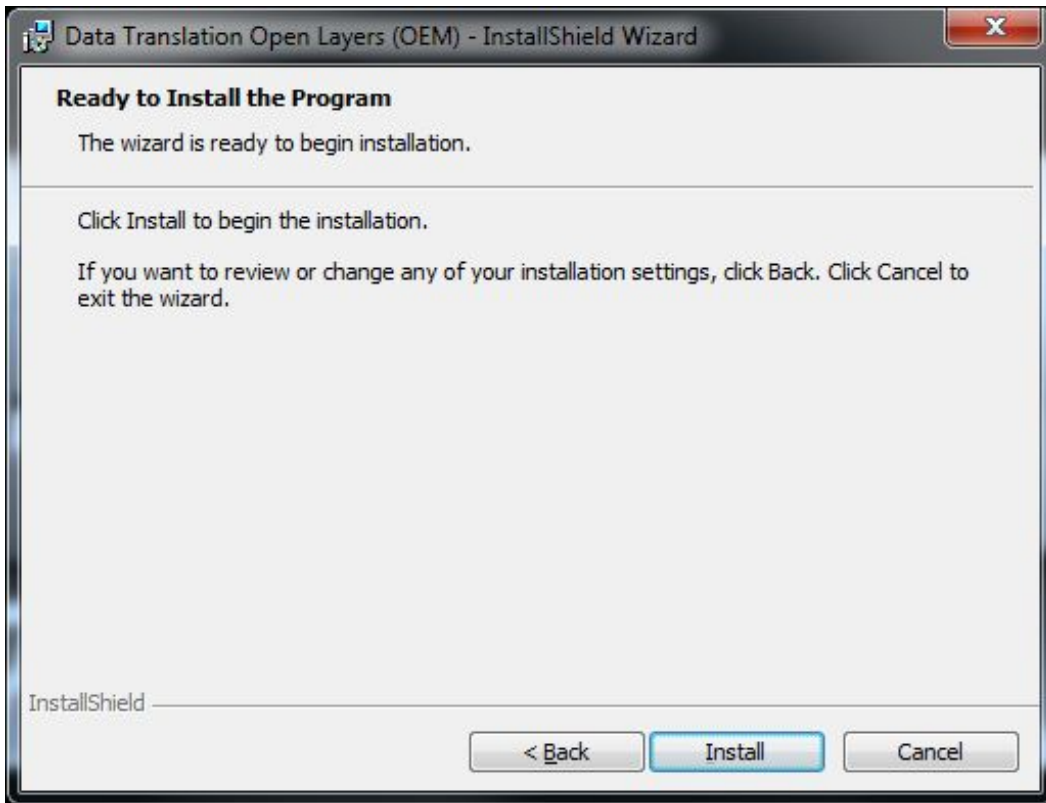
After SpeedCast Software has finished installing, open SetupOEM folder and click on the following file: SetupOEM.exe (or right click on it and click on Run as Administrator).



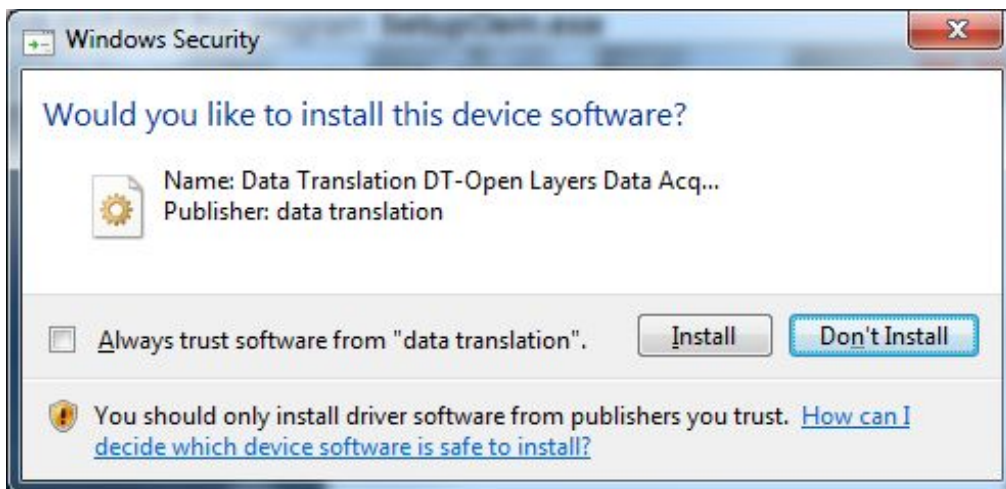
Click "Next"



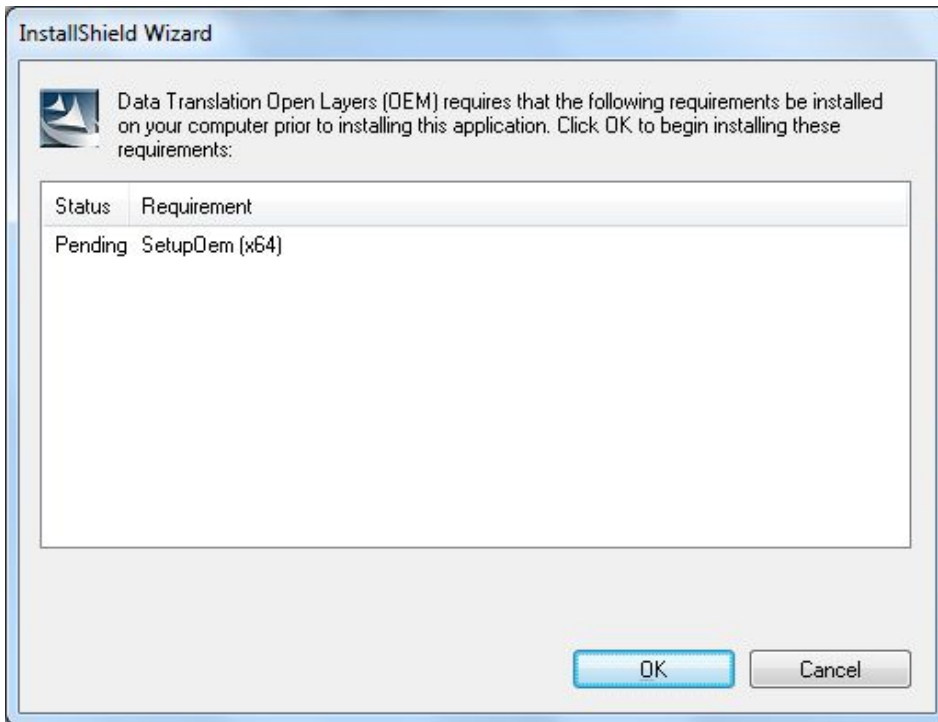
If you see this screen, click "Modify" and then "Next"



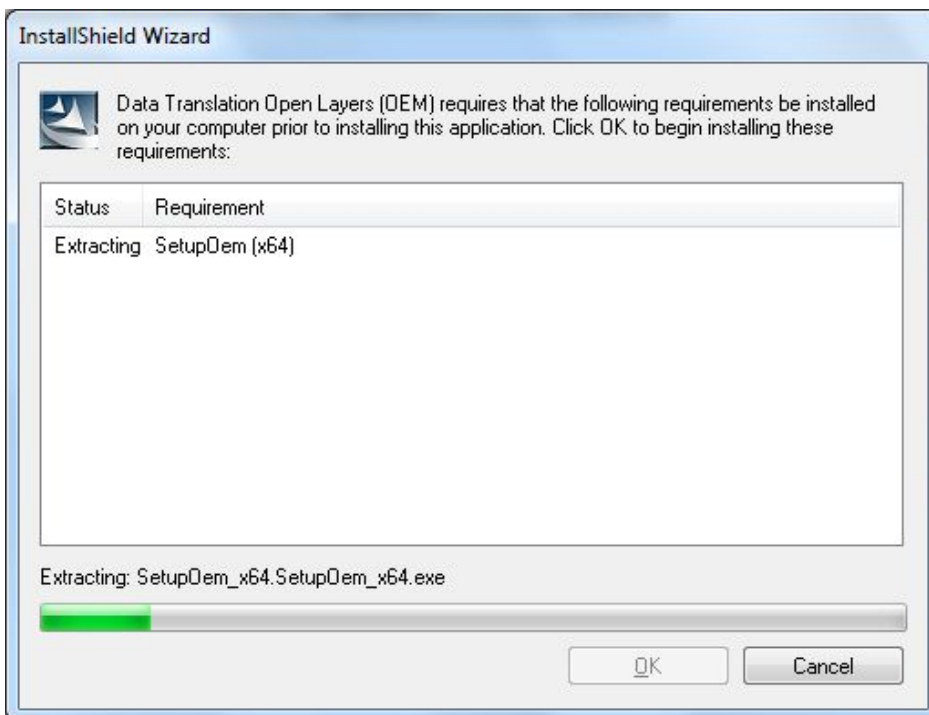
Click "Install"



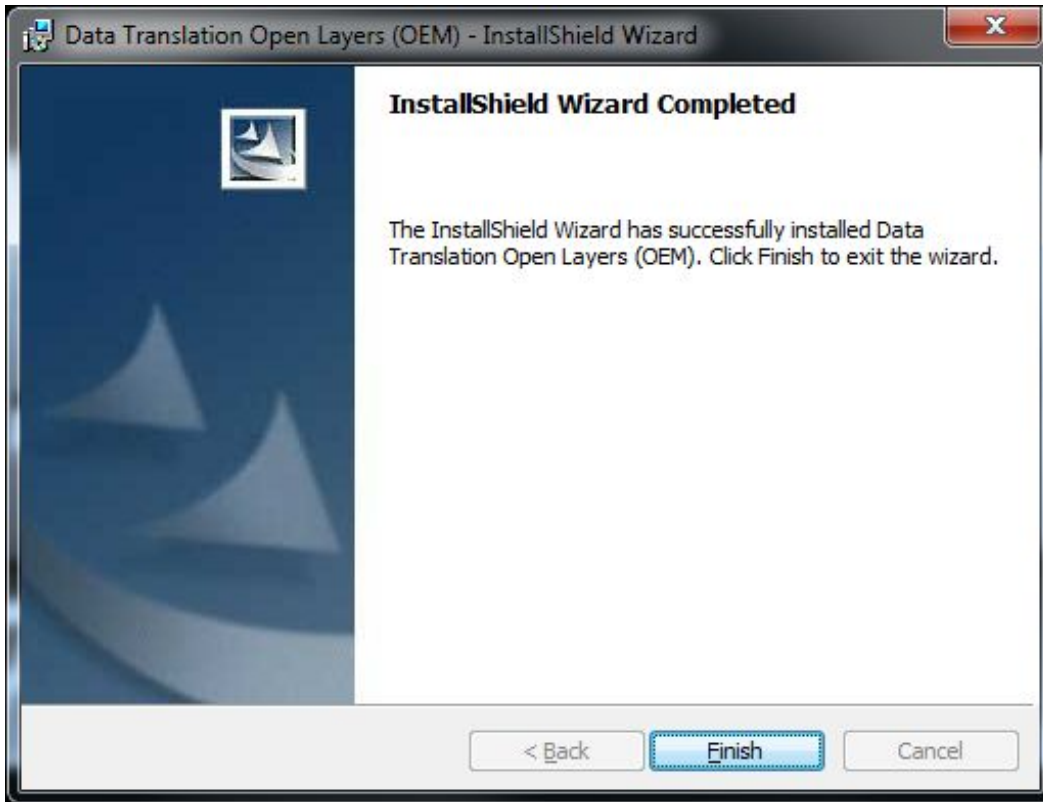
About mid-way through the installation, you may get this message window. Click "Install" to proceed.



If you are installing on a 64 Bit Windows PC, you will get this message window. Click OK



Wait for software to load...



Software is now successfully loaded. Click "Finish".

### **Step 4: Load Databases**

You must also copy the Sensor Database XML file and any other update database files (they will be in the Database Folder in your installation files) to your Documents>MetalMAX\Shared folder. Copy over existing files of the same name. You will also copy any machine, toolholder, tool and materials XML databases and paste them into this same shared folder.